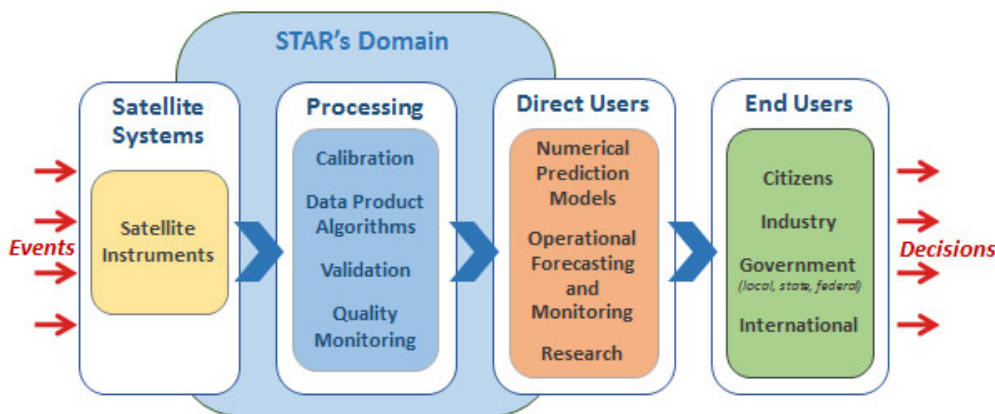




# STAR CENTER FOR SATELLITE APPLICATIONS AND RESEARCH



STAR, a component of the National Environmental Satellite, Data, and Information Service (NESDIS), provides satellite remote sensing science for transforming raw satellite observations into real time and near real time data and information products.

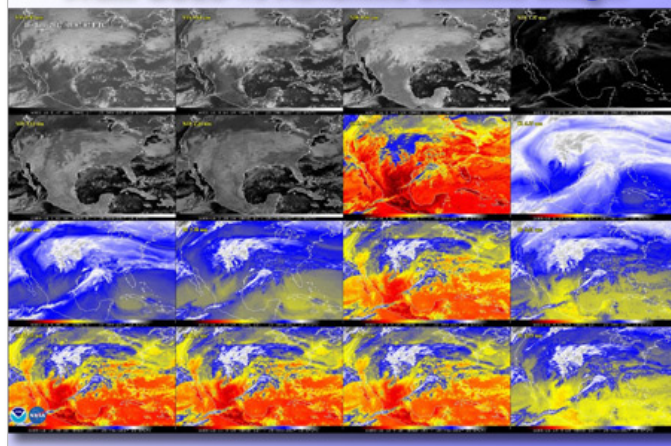


STAR products and services meet NOAA and partner needs for satellite information critical to forecasting, monitoring and environmental assessment of impacts for weather, oceans and fisheries to protect lives, property and the economy

## Product and service categories are:

- **Remote sensing science development** - Develop algorithms and software; support instrument development; develop health monitoring and calibration / validation systems
- **Science maintenance and sustainment** – maintain calibration, monitor product quality, resolve anomalies and aging impacts
- **Systems and tools** - support STAR needs, and deliver selected products and services to NOAA users and partners.
- **Applied research, data-product technology development, and risk reduction** - in conjunction with Cooperative Institutes, innovate new and improved products and services through user-inspired science
- **User engagement** - optimize satellite data application; training; provide experimental data sets; respond to anomalies and improvement requests; partner to enable the US to take advantage of the global observing system

## STAR Scientists Produce First Light Image From GOES-16 Advanced Baseline Imager



- **Formulation** - develop requirements for product and instrument performance, plan new product developments; assess impacts of new data streams, loss of data streams, and sensitivities to changes in data streams





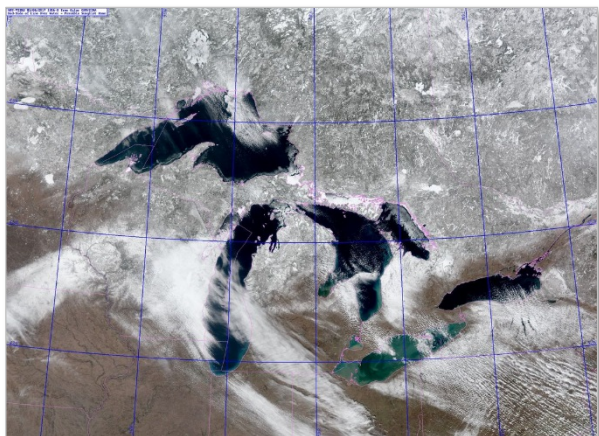
# STAR

## CENTER FOR SATELLITE APPLICATIONS AND RESEARCH



### STAR People

- Approximately 70 civil servants including world leading scientists; and supporting IT, and business professionals
- Approximately 200 personnel comprised of on-site support contractors and grantees primarily located at three university-based Cooperative Institutes in Maryland, Colorado, and Wisconsin and one Educational Institute in New York city.



### STAR Projects

- Support approximately 40 instruments in orbit or in development including POES, Metop, GOES, JPSS, GOES-R, JASON series
- Approximately 75 data products from NOAA missions and products derived from partner satellite missions including those from EUMETSAT, Japanese Meteorology Agency, Japanese Space Exploration Agency, NASA, Defense Department, ESA, Indian Space Research Organization
- Blended products which integrate data from multiple sources
- Research and Technology projects funded by NESDIS, all the other NOAA line offices and other Agencies (primarily NASA) to enable new or improved products, applications, and assimilation methods

